



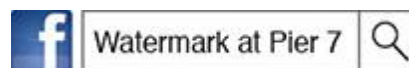
***Conveniently situated at the Hong Kong Central Star Ferry Pier
with an unparalleled 270 degree view of Victoria Harbour,
its stunning backdrop is one to be marvelled at.***

The elegant water feature and stone entranceway leads you into a sleek interior of teak, metal, marble and glass. With an open-plan space of 3,300 square feet, the restaurant can be utilized to full capacity or partitioned to create a more intimate dining experience.

Watermark is a chic and refined venue ideal for large corporate events and parties, just as smaller gatherings can be accommodated in the Private Dining Room or a section of the restaurant. In addition to events and dinners held at Watermark, we are happy to offer delectable dishes and services to your home, office or boat trip.

Our Executive Chef leads the dedicated and skilled team of chefs to surprise and delight your taste buds with a modern cuisine of Contemporary-Continental. All our function packages and menus are tailor-made to suit your themes and needs.

Give us the brief and we will do the rest...



FEATURES · 特色

- Unparalleled 270-degree view of Victoria Harbour
三面環海設計，可飽覽 270 度的維港景致
- Spacious venue with modern décor (approximately 3,300 sq ft)
裝潢時尚，場地寬敞 (面積廣達 3,300 平方尺)
- The elegant water feature, stone entranceway and translucent sky-light ceiling give the restaurant a natural atmosphere and luminous daylight
深色雲石瀑布的走廊及巨型天窗，令整個餐廳充滿自然氣色

HOW TO FIND US · 交通

- **BY WALKING** 步行
A short walk from Hong Kong or Central MTR Station (approximately 8 minutes).
Head towards Central Pier 7 then take the lift to Level P
從香港或中環港鐵站步行約 8 分鐘至中環 7 號天星碼頭；乘升降機至 P 樓層
- **BY FERRY** 天星小輪
Take the Star Ferry across from Tsim Sha Tsui
從尖沙咀乘坐天星小輪到中環

CAR PARKING · 泊車

- Available at Two ifc and 9 Edinburgh Place
國際金融中心商場 2 期及中環愛丁堡廣場 9 號設有收費停車位

DRESS CODE · 衣著

- Smart-Casual
時尚休閒

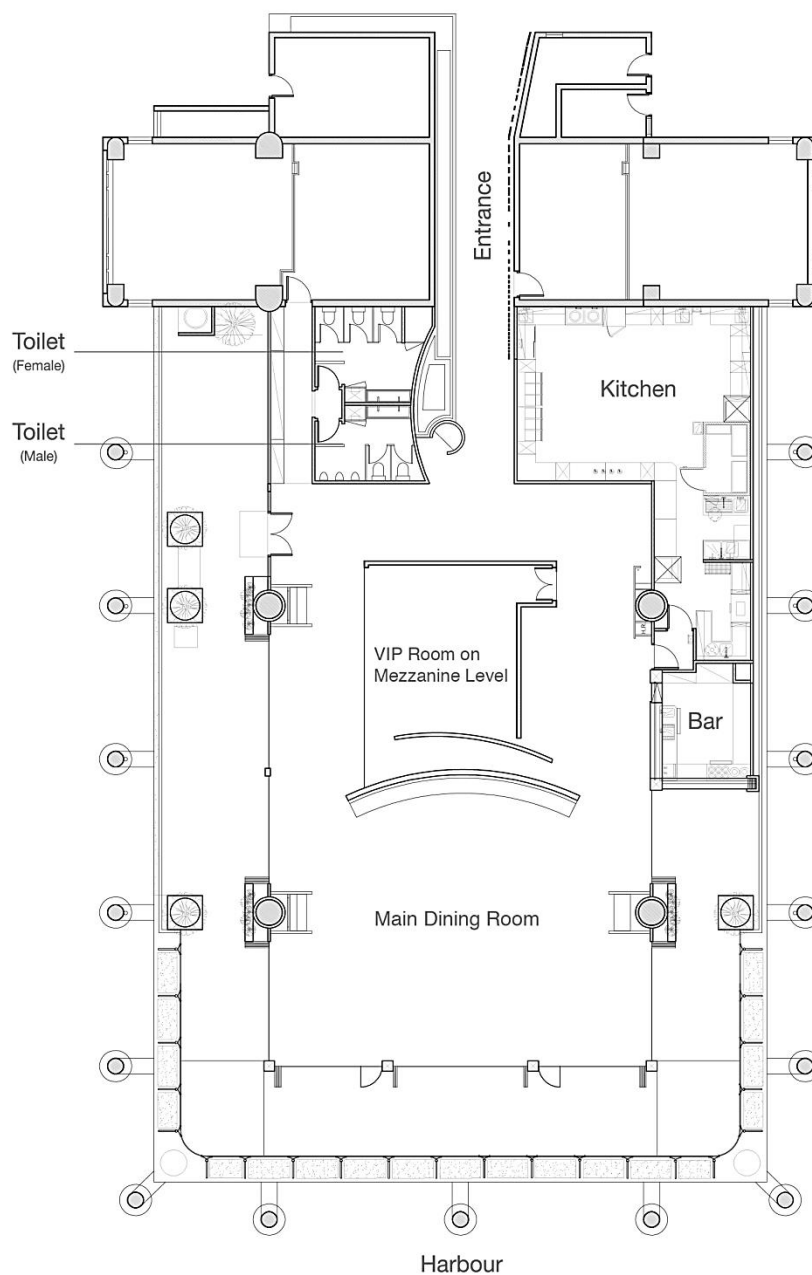
EVENT BOOKING · 場地活動預訂

- Telephone 電話: (852) 2290 6664
- Fax 傳真: (852) 2549 4467
- Email 電郵: events@cafedecogroup.com
- Website 網址: www.cafedecogroup.com

WATERMARK

SEAFOOD BAR AND GRILL

FLOOR PLAN · 平面圖



For reference only. Plan not to scale.
圖片只供參考。平面圖不合符比例。

MAXIMUM CAPACITY 最多容納人數	SIT DOWN (LONG TABLE) 座位 (長枱)	BUFFET (LONG TABLE) 自助餐 (長枱)	COCKTAIL 雞尾酒會
Main Dining Room 主場地	150	140	250
VIP Room on Mezzanine Level 貴賓房	24	24	/
Total 總數	174	164	250

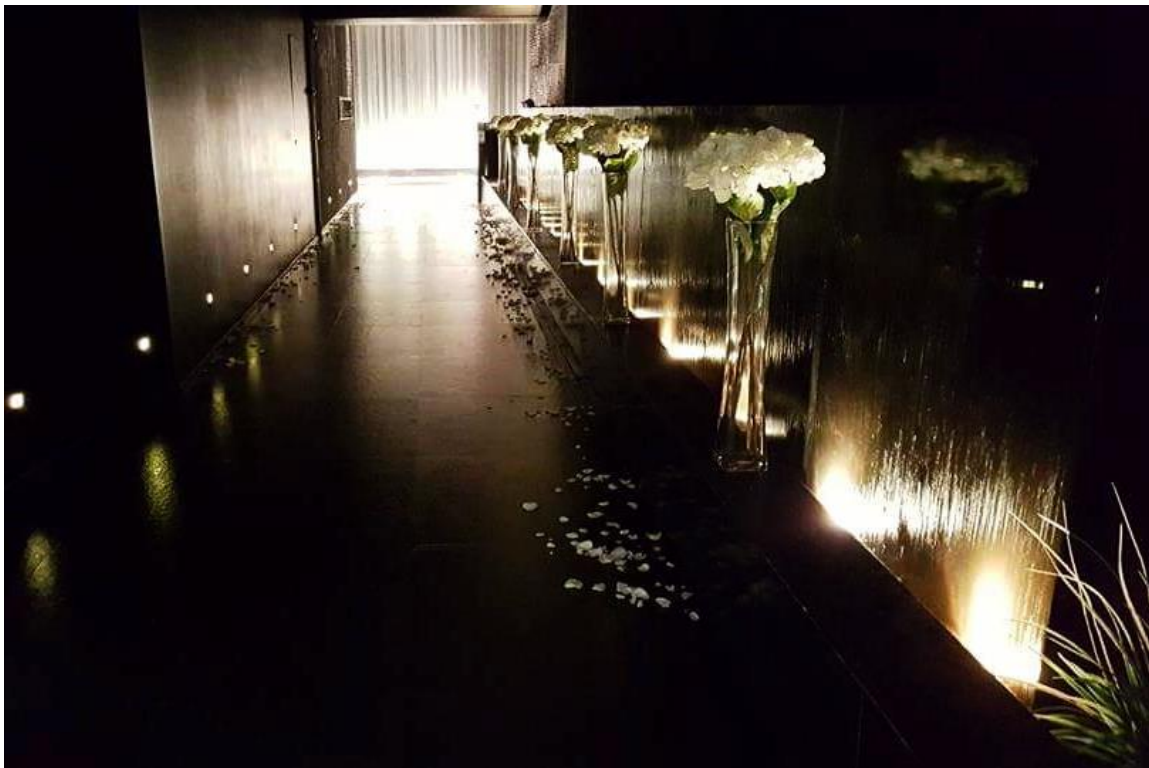
WATERMARK

SEAFOOD BAR AND GRILL

ENTRANCE · 正門



WATER FEATURE ENTRANCEWAY · 瀑布走廊



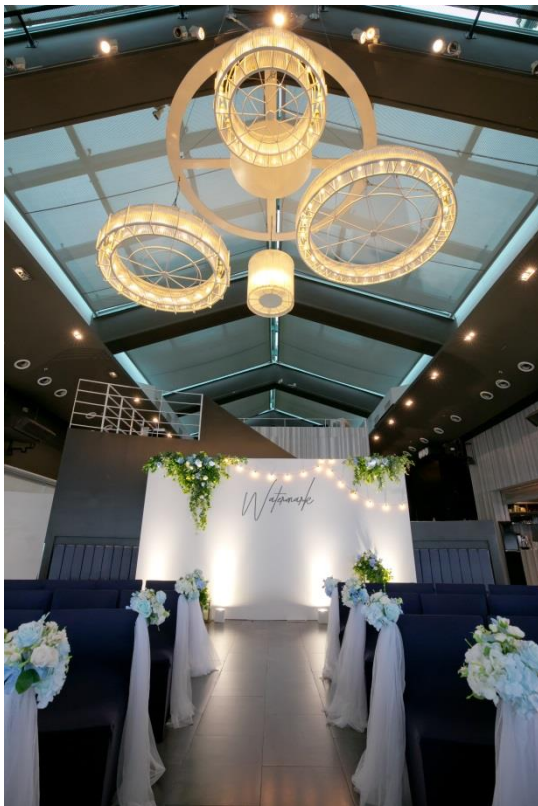
WATERMARK

SEAFOOD BAR AND GRILL

VIP ROOM · 貴賓房 (Mezzanine Level 閣樓)



MAIN DINING ROOM · 主場地



WATERMARK

SEAFOOD BAR AND GRILL

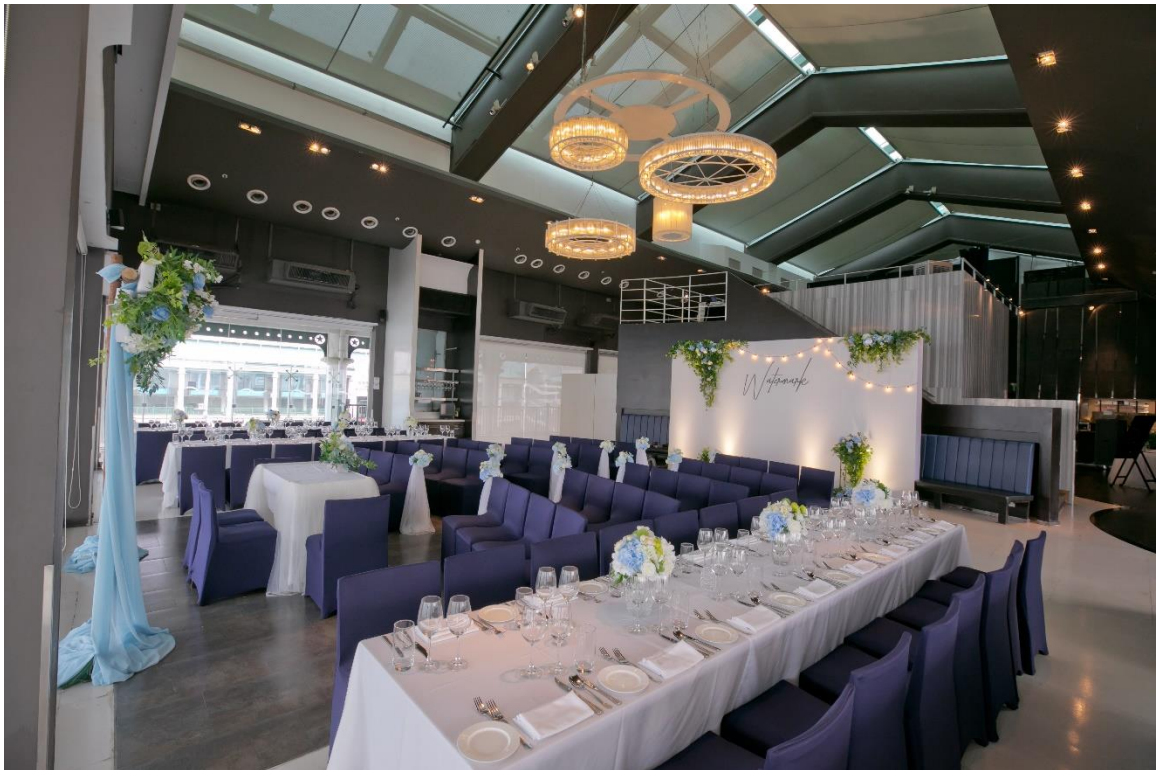
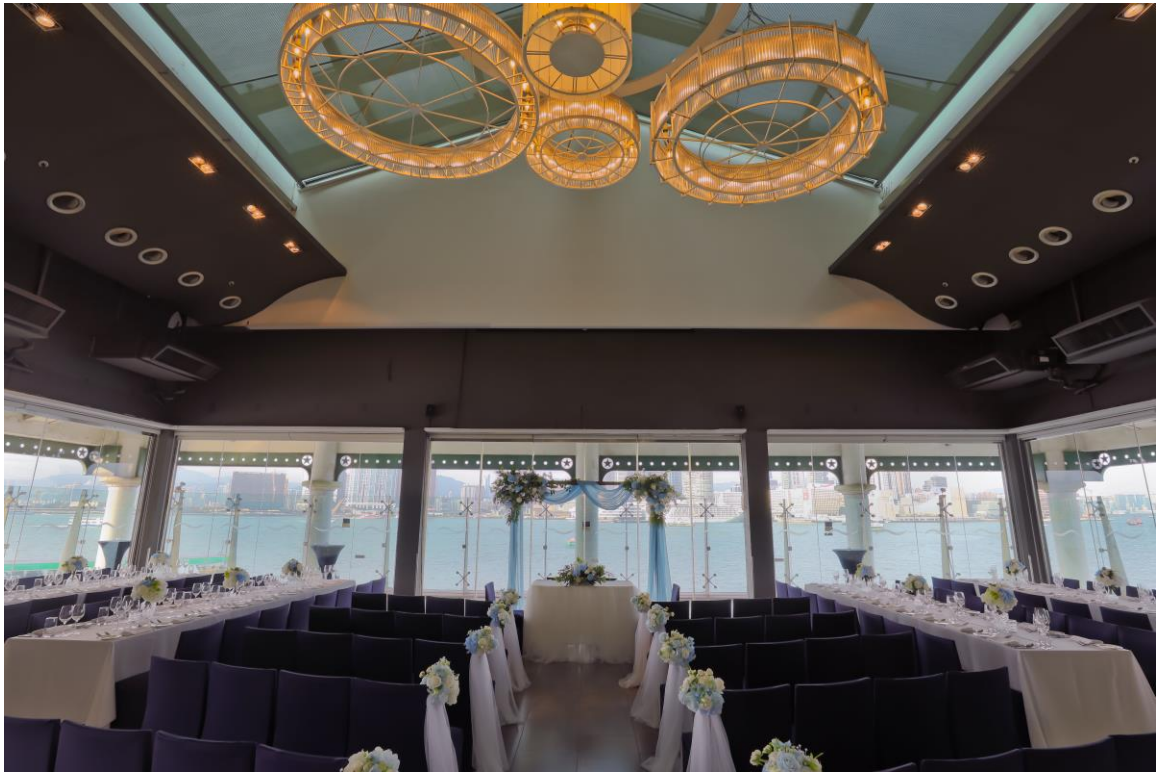
MAIN DINING ROOM · 主場地



WATERMARK

SEAFOOD BAR AND GRILL

MAIN DINING ROOM · 主場地



WATERMARK

SEAFOOD BAR AND GRILL

MAIN DINING ROOM · 主場地

